

G-127

127

#2076  
3rd F.S. 101

### KREB'S ADDITION

IN

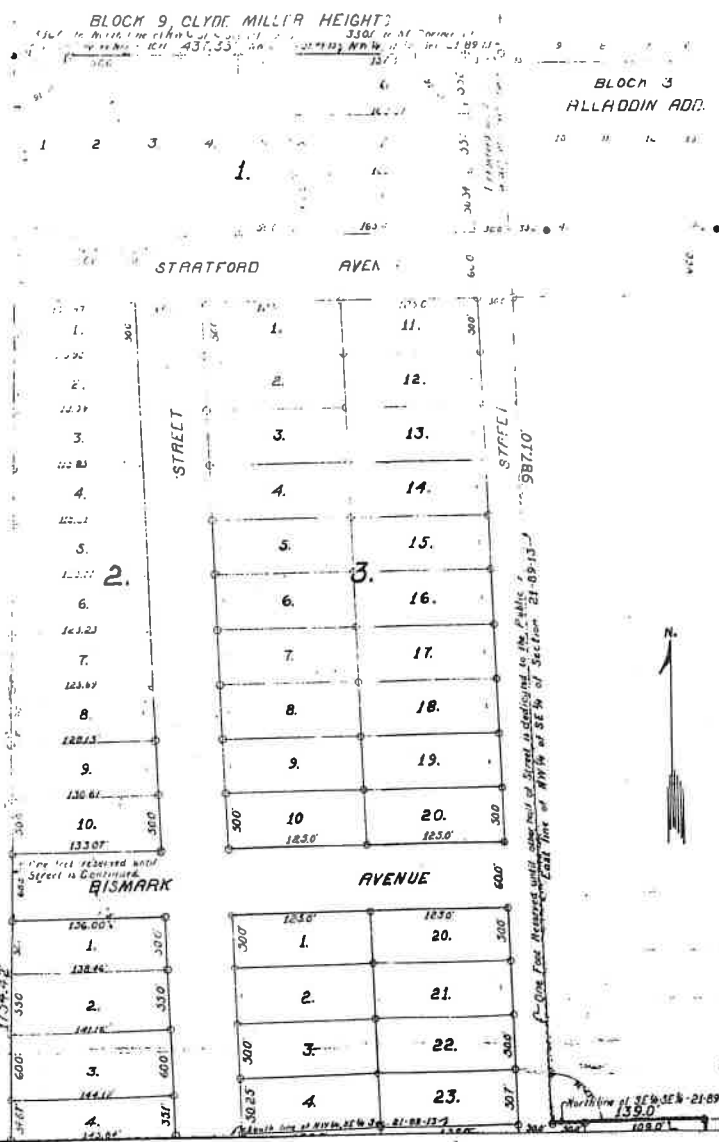
Black Hawk County, Iowa

Ralph B. Shippy Engineering Corp.  
Waterloo, Iowa

Scale 1"=60' January 1941

BLOCK 9, CLYDE MILLER HEIGHTS

BLOCK 3  
ALLADDIN ADD.



North line of Sec. 26, T. 28 N., R. 21 E., S. 13-2  
135.0'

129

